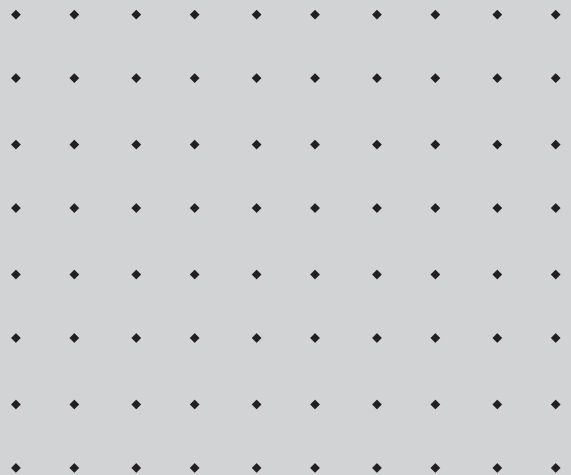


CZ Service Manuals

RiD90117i

Polarity Injector Diesel





Standard Injector Connector (Generic Type)



Standard Injector Connector (Delphi EU3/4 Type)



Delphi EU5 Injector Connector



Bosch CRIN Injector Connector

Piezo Injector Polarity



WARNING!

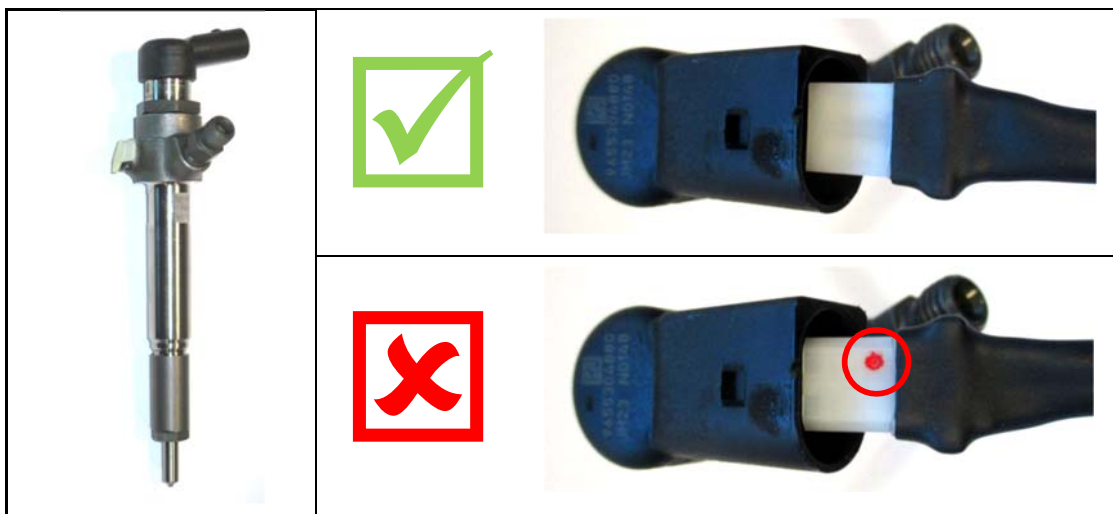
INVERSE POLARITY MAY DAMAGE PIEZO INJECTORS. MAKE SURE ALL PIEZO INJECTORS USING THE GENERIC TYPE CONNECTOR ARE CONNECTED AS ILLUSTRATED BELOW.

1.1.1.1 Bosch Piezo (0445 115 xxx, 0445 116 xxx, 0445 117 xxx)



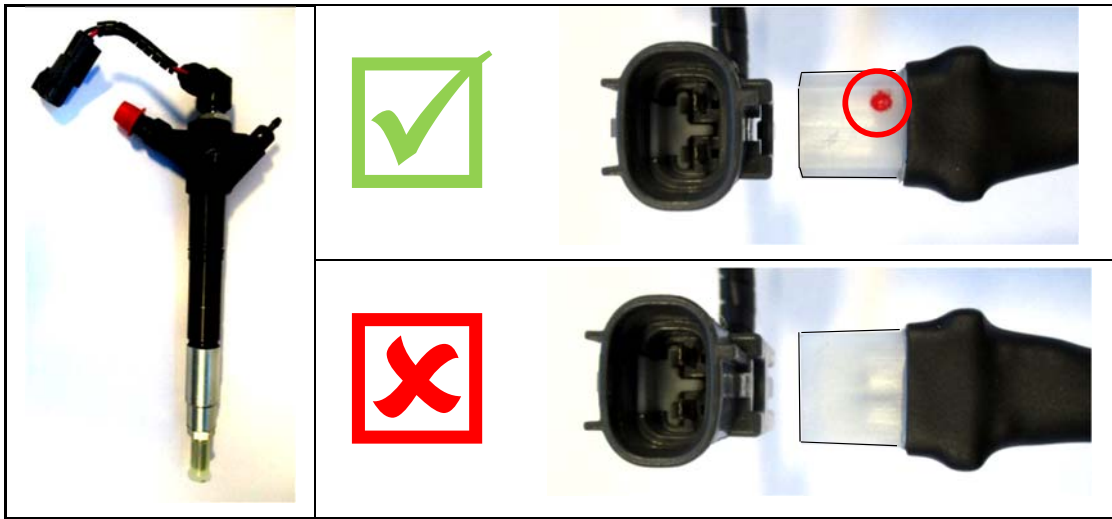
Bosch Piezo Connector Orientation

1.1.1.2 VDO Piezo (5WSxxxxx, A2C595xxxxx)



VDO Piezo Connector Orientation

1.1.1.3 Denso Piezo (295900-xxxx)



Denso Piezo Connector Orientation

Injector Cable Reference Table

Injector Manufacture	Injector Part Number	Injector Type	Injector Connector	Cable Connector	Polarity Sensitive	
Bosch	0445 110 xxx	Coil			x	
	0445 115 xxx	Piezo			✓	
	0445 116 xxx					
	0445 117 xxx					
	0445 120 xxx	Coil			x	
Continental / VDO	77550	Piezo			✓	
	5WS4xxxx					
	A2C595xxxx					
Delphi	EJBRxxxxx	Coil			x	
	EJDRxxxxx					
	EMBRxxxxx		or	or		
	282xxxxx					
	283xxxxx					
284xxxxx						
Denso	095000-xxxx	Coil			x	
	295050-xxxx					
	295900-xxxx	Piezo			✓	



Main Offices & Production Plant

364 Varis-Koropiou Ave. Koropi
194 42 Athens, Greece

Headquarters

A.I.S. GmbH
75438 Knittlingen, Germany

email contact@carbonzapp.com

tel +30 210 9856110

fax +30 210 9928655

carbonzapp.com